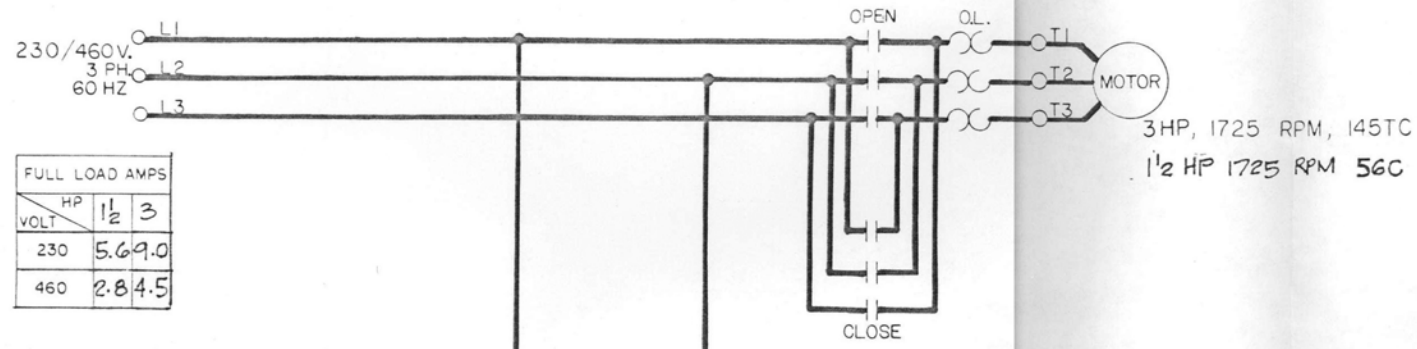
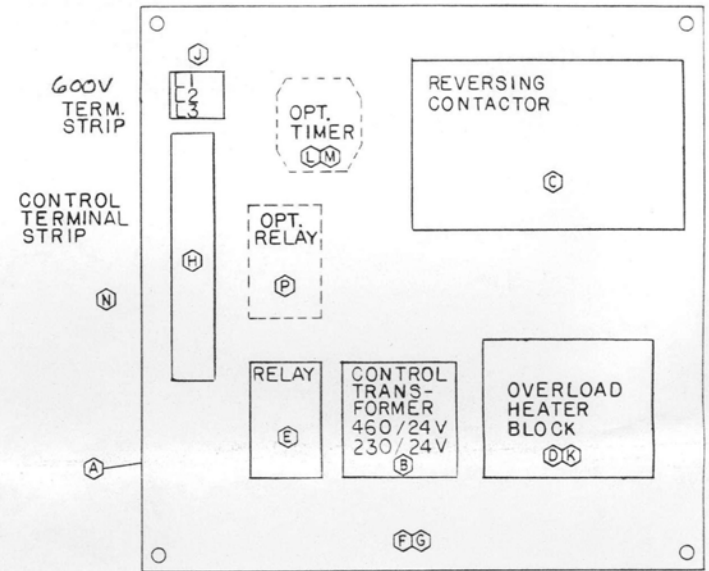
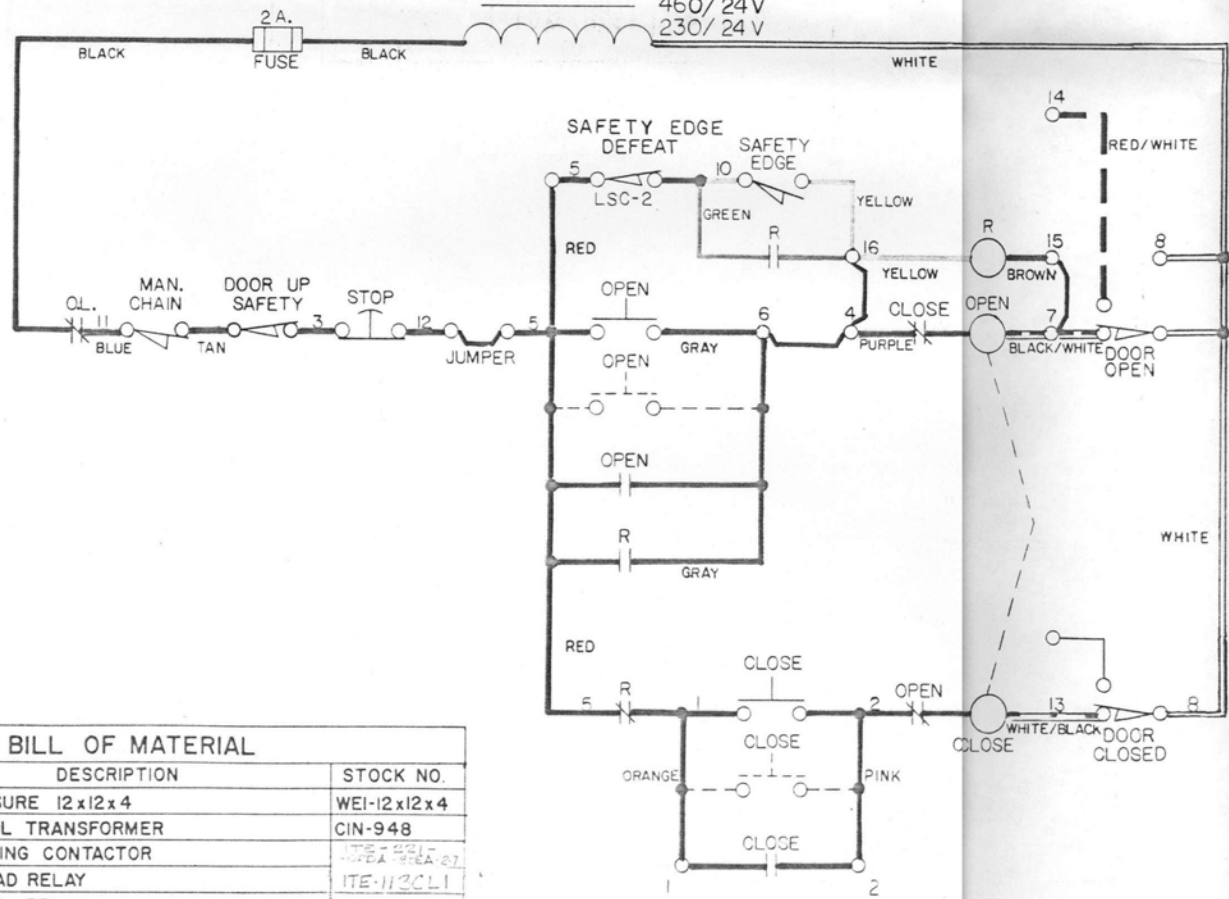


120 INCH TELESCOPING DOOR MAINTENANCE

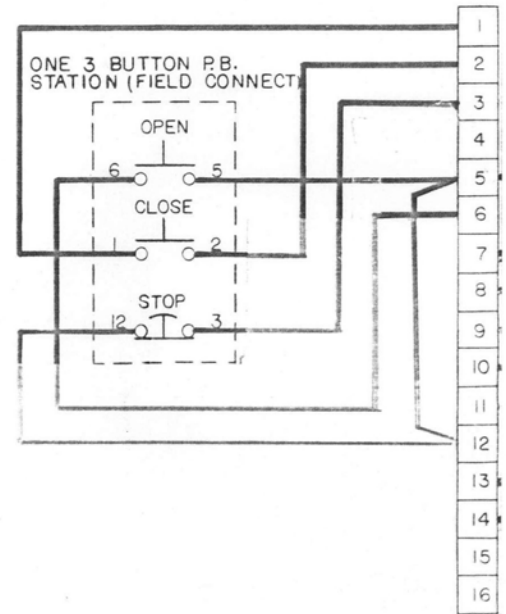
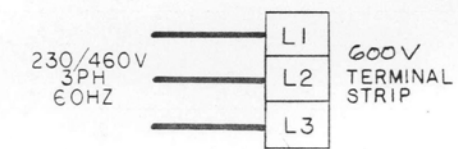
STANDARD CONTROL CIRCUIT FOR THE INRYCO TELESCOPING DOOR



FULL LOAD AMPS			
HP	1/2	3	
230	5.6	9.0	
460	2.8	4.5	



PANEL LAYOUT NOT TO SCALE



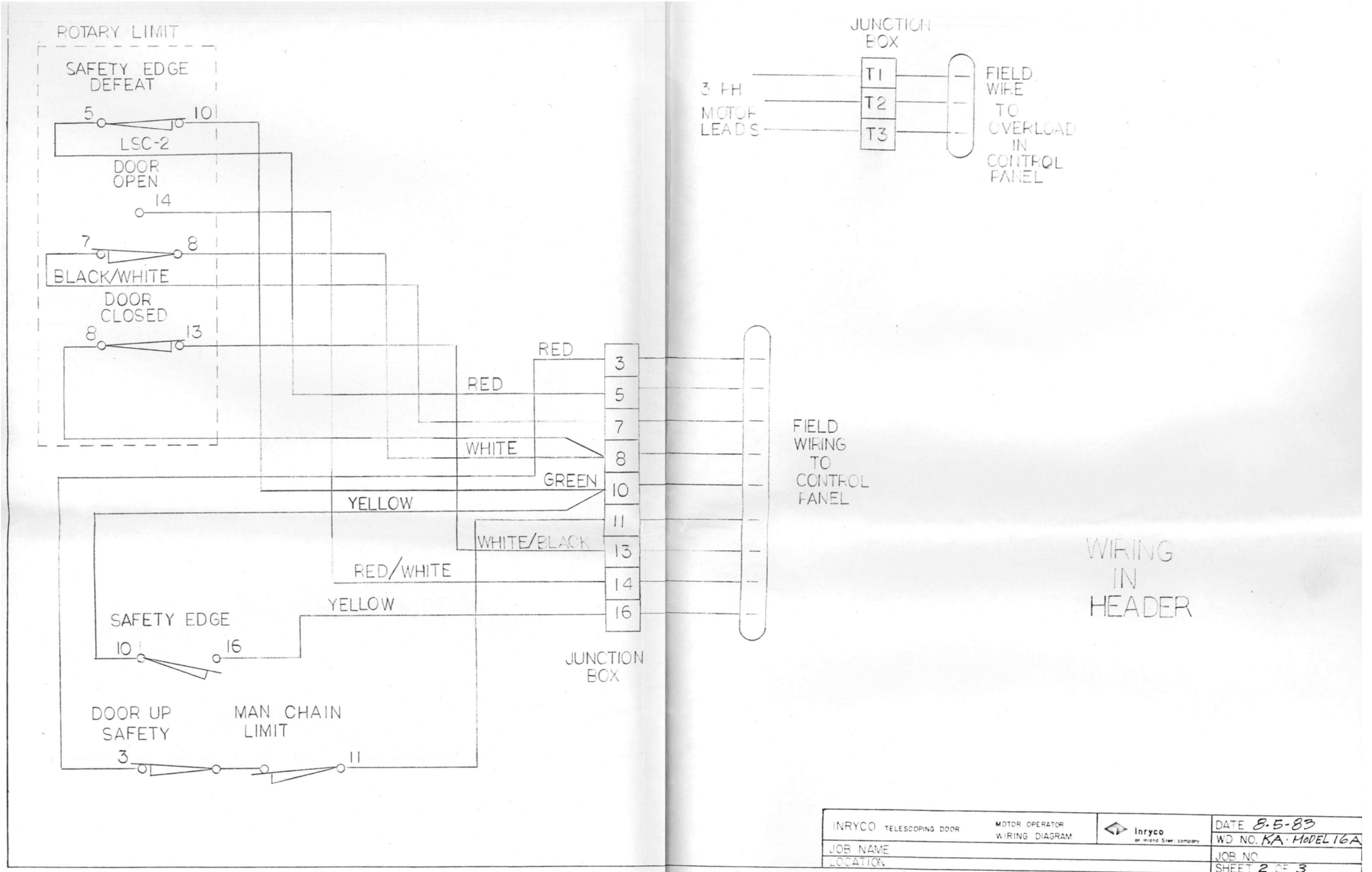
BILL OF MATERIAL			
SYM	QTY.	DESCRIPTION	STOCK NO.
A	1	ENCLOSURE 12x12x4	WEI-12x12x4
B	1	CONTROL TRANSFORMER	CIN-948
C	1	REVERSING CONTACTOR	ITE-112CL1
D	1	OVERLOAD RELAY	ITE-112CL1
E	1	CONTROL RELAY	KUP-11A55
F	1	CONTROL CIRCUIT FUSE	BUS-AGCI
G	1	FUSE HOLDER	LIT-155020A
H	1	CONTROL TERMINAL STRIP	MAR-116
J	1	POWER TERMINAL STRIP	CON-NFT3
K	3	OVERLOAD HEATER	ITE-112CL1
OL	1	OPTIONAL TIMER RELAY	NCC-KIKIBO-66I
OM	1	OPTIONAL TIMER RELAY BASE	CUR-CUS 12
ΔN	1	OPTIONAL RADIO CONTROL RECEIVER & TRANSMITTER	TOM-CM-II
ΔP	1	OPTIONAL RADIO CONTROL RELAY	DEL-166F

○ PARTS NEEDED FOR TIME DELAY OPTIONS
 Δ PARTS NEEDED FOR RADIO CONTROL OPTION

NOTE: CONTROL CIRCUIT SHOWN WITH DOOR AT MID POINT OF TRAVEL

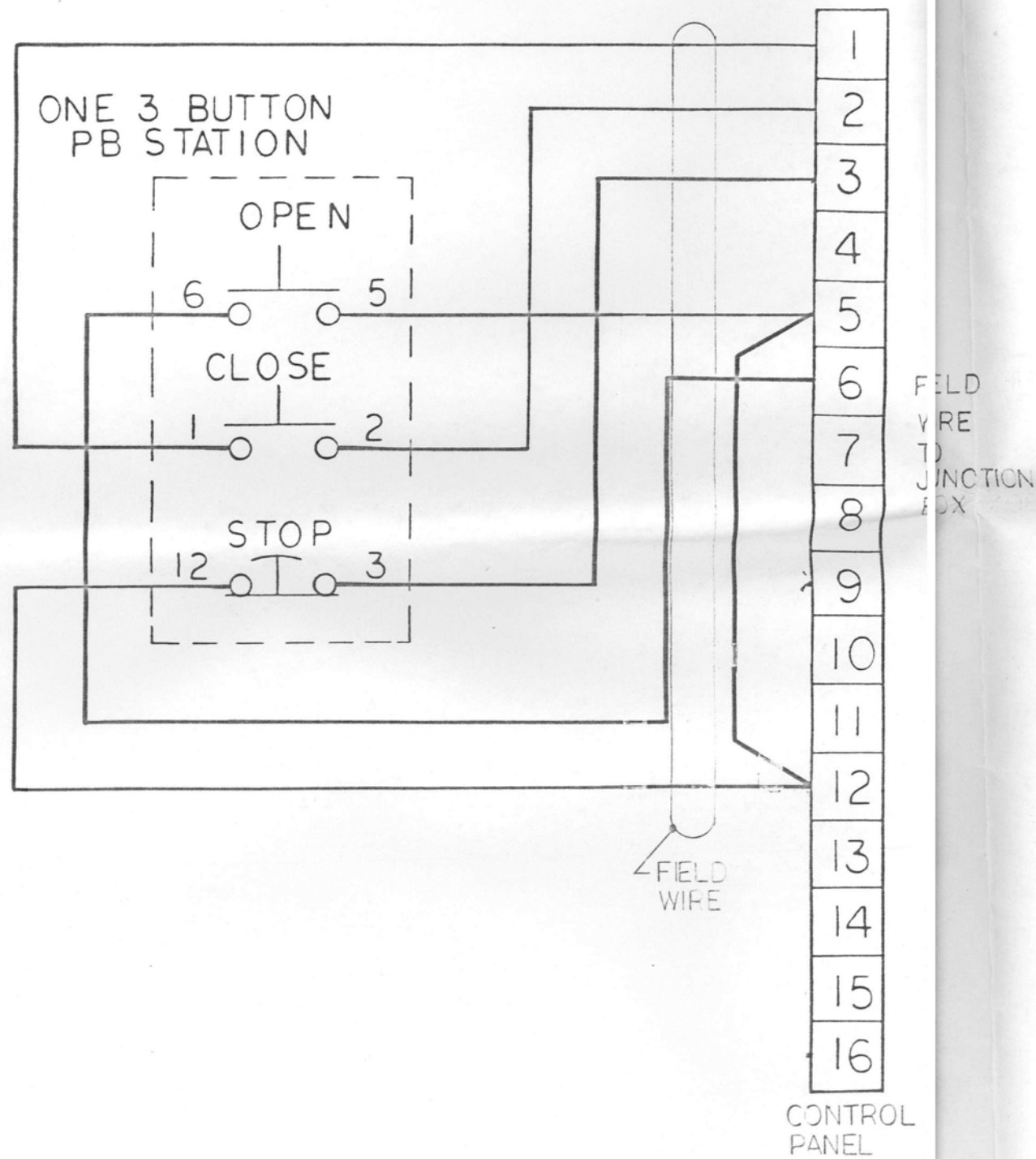
INRYCO TELESCOPING DOOR	MOTOR OPERATOR WIRING DIAGRAM	Inryco an Inland Steel company	DATE 8-5-83
JOB NAME	LOCATION		WD NO. KA-MODE
			JOB NO.
			SHEET 1 OF 3

120 INCH TELESCOPING DOOR MAINTENANCE

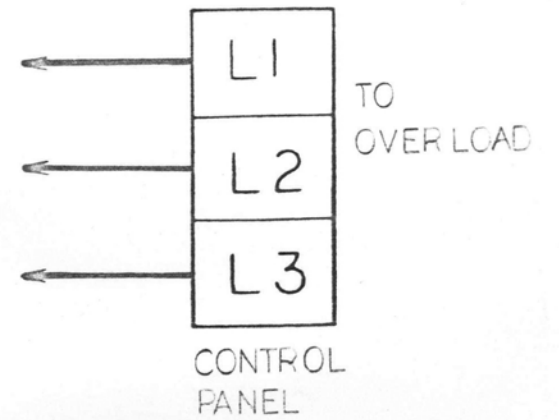


INRYCO TELESCOPING DOOR	MOTOR OPERATOR WIRING DIAGRAM	 <small>Inryco an Inland Steel company</small>	DATE <i>8-5-83</i>
JOB NAME			WD NO. <i>KA-MODEL 16A</i>
LOCATION			JOB NO.
			SHEET <i>2</i> OF <i>3</i>

120 INCH TELESCOPING DOOR MAINTENANCE



230/460 V
3 PH
60 HZ



NOTE:
WIRING CONNECTIONS TO TERMINALS ARE TYPICAL REGARDLESS OF LINE VOLTAGE

CAUTION - IF SHAFT ROTATION IS NOT AS SHOWN IN FIGURE 8 OF INSTALLATION INSTRUCTIONS WHEN "OPEN" PUSH BUTTON IS DEPRESSED - MOTOR IS INCORRECTLY PHASED. PHASING CAN BE CORRECTED BY CHANGING ANY TWO (2) POWER LEAD-INS. DO NOT CHANGE WIRES AT PUSH BUTTON CONTROL STATIONS.

TELESCOPING DOOR - MOTOR OPERATOR WIRING DIAGRAM	INRYCO	DATE 8-5-83
JOB NAME		WD. NO. KA-MODEL 16A
LOCATION		JOB NO.
		SHEET 3 of 3